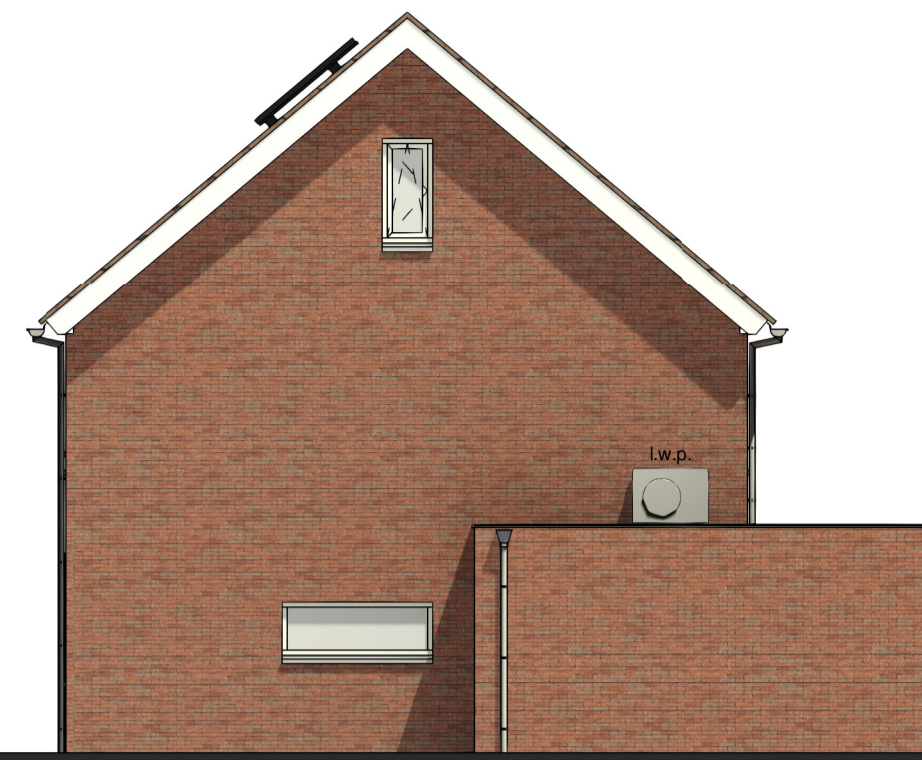




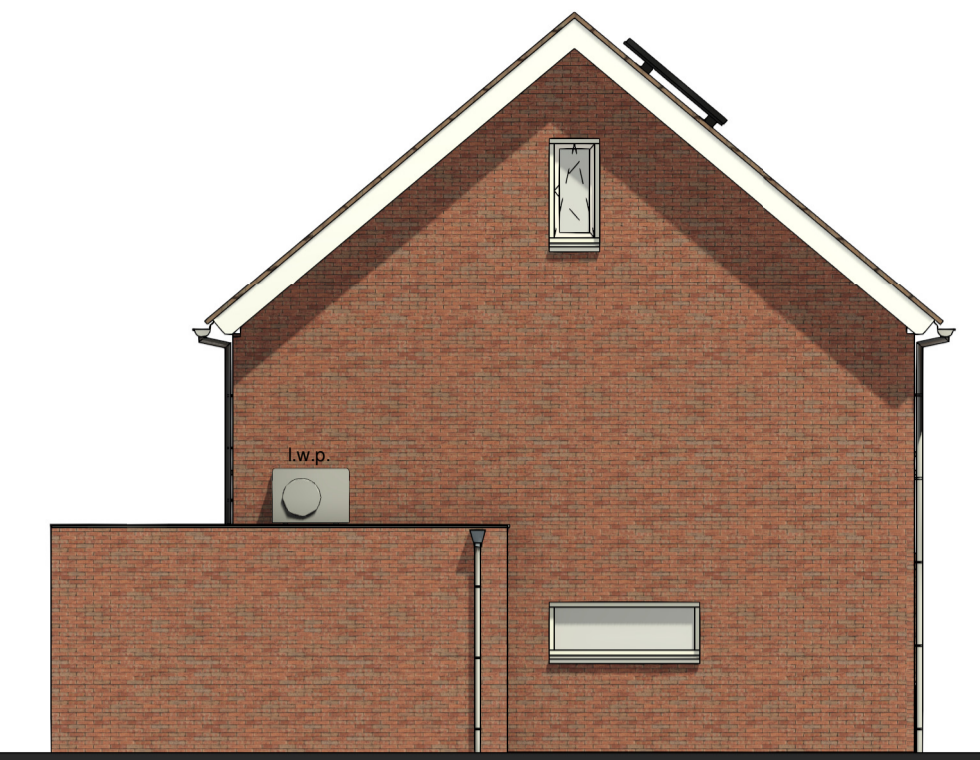
voorgevel



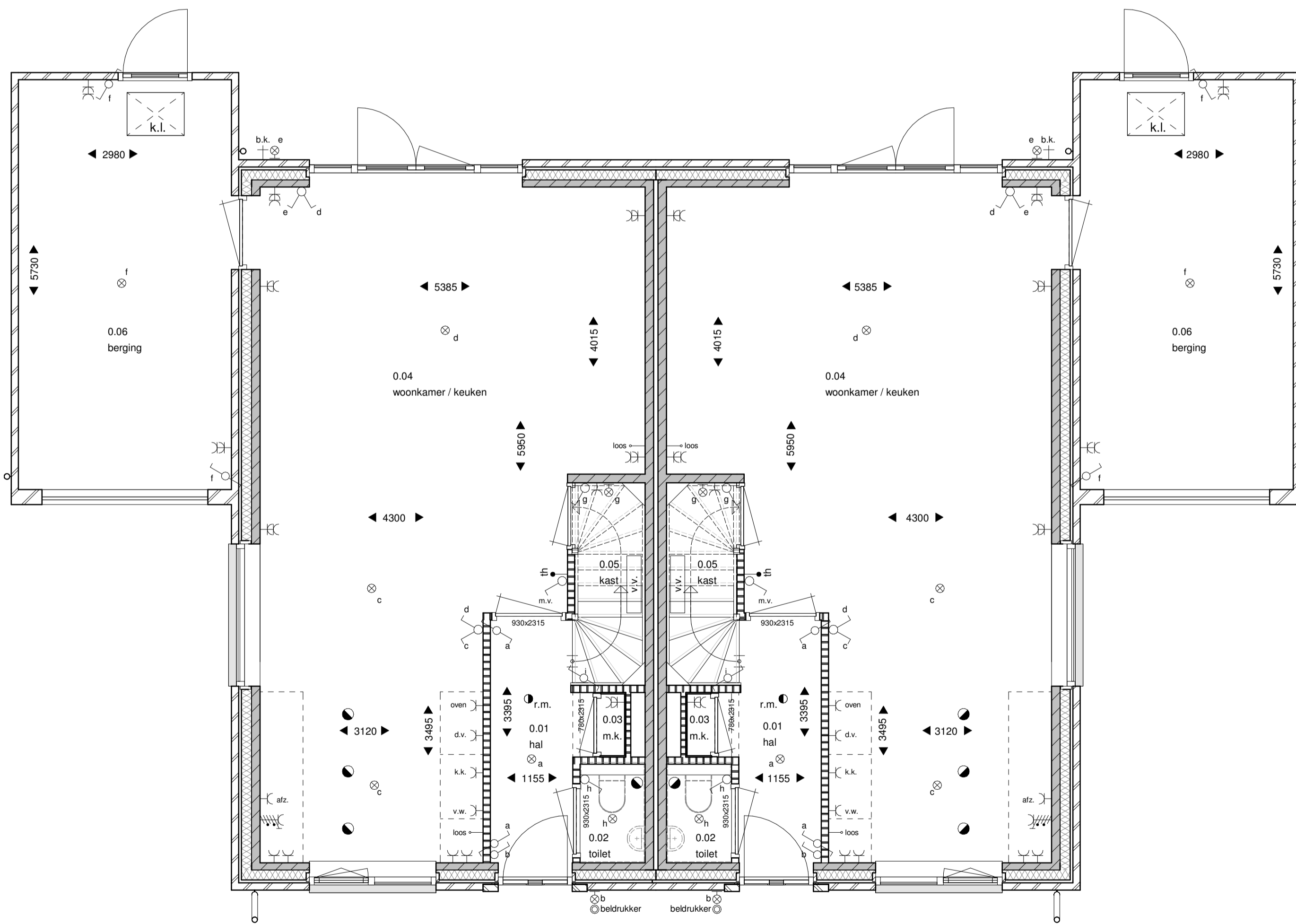
rechtergevel



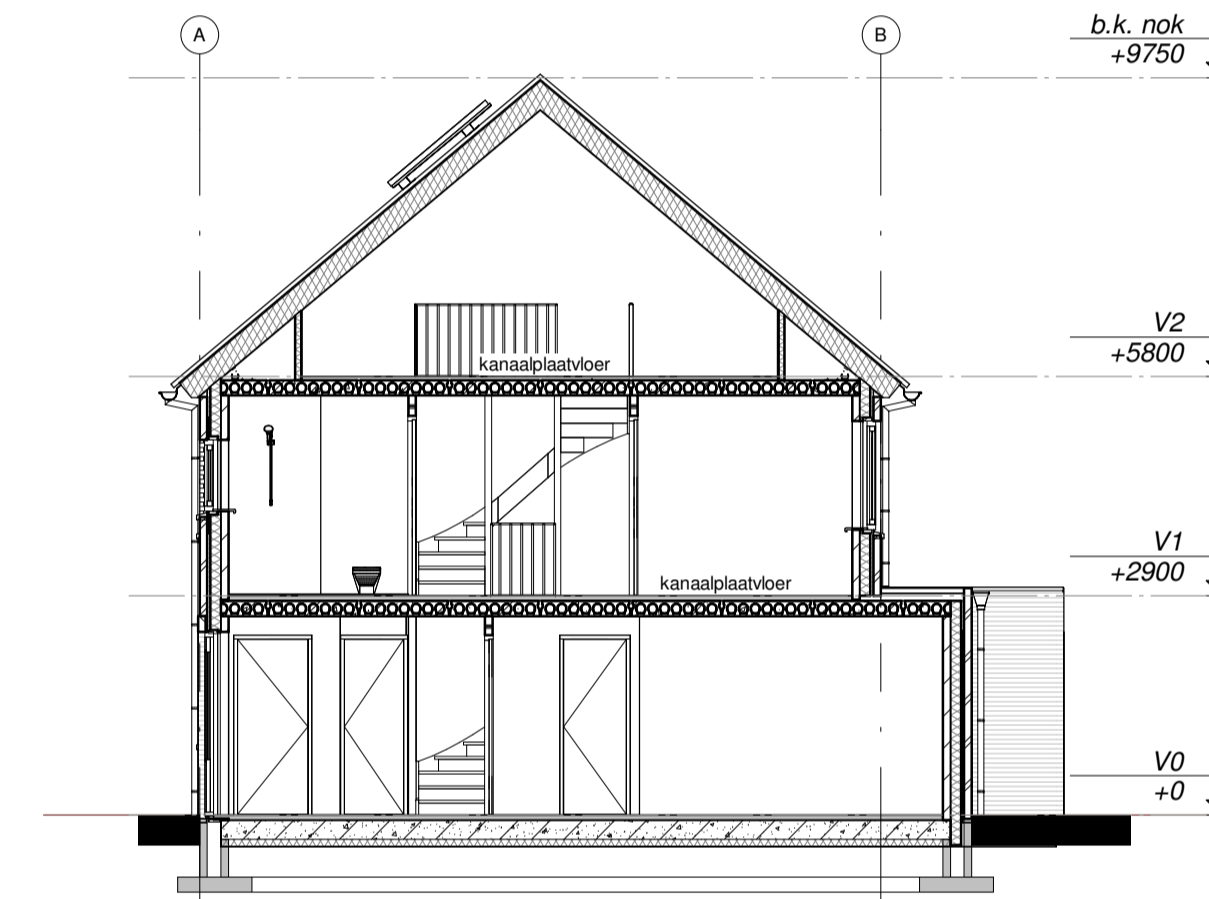
achtergevel



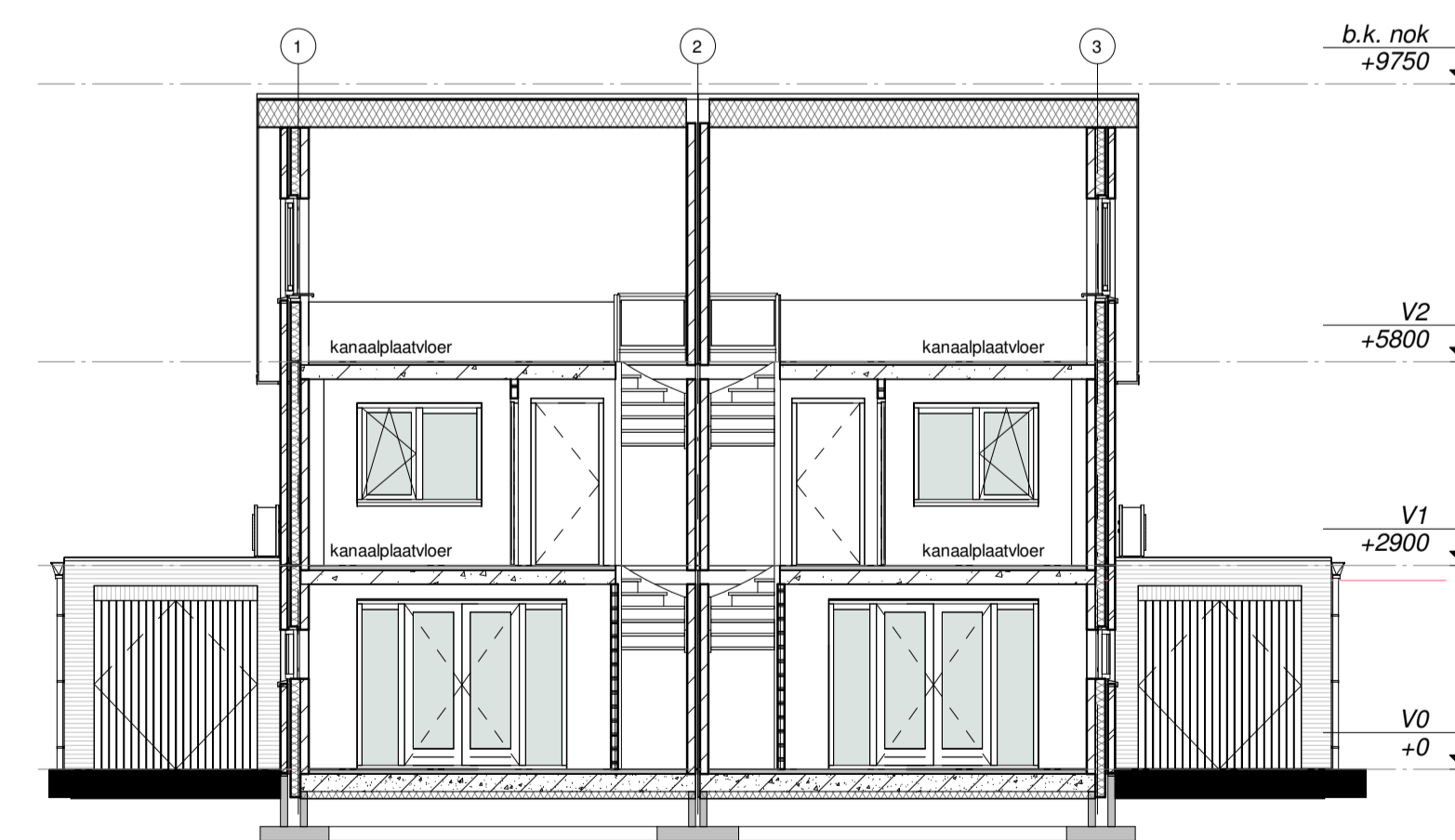
linkergevel



begane grond













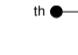


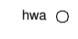




doorsnede A-A



doorsnede B-B

renvooi

-  enkele schakelaar
-  wisselschakelaar
-  plafondlichtpunt
-  wandlichtaansluitpunt
-  enkele wandcontactdoos met randaaarde
-  dubbele wandcontactdoos met randaaarde
-  enkele wandcontactdoos met randaaarde t.b.v. afzuigkap (2300+)
-  contactdoos 2 fase
-  230V voeding 1 fase t.b.v. mv en CO2
-  enkele wandcontactdoos met randaaarde t.b.v. wasmachine (op aparte groep)
-  enkele wandcontactdoos met randaaarde t.b.v. koelkast
-  bedrade leiding t.b.v. aarding
-  schel
-  bedrukker
-  thermostaatleiding (bedraad)
-  loze leiding
-  loze leiding t.b.v. boiler (pvc 3/4 naar meterkast)
-  rookmelder
-  mechanische ventilatie ventiel plafond
-  hemelwaterafvoer



tek. nr	: VK-01	fase	: Verkoop
getekend	: R.B.	datum	: 10-04-2024
formaat	: A1	gewijzigd	: -
project	: 2 ^a 1 kap woning te Rijssen		
onderdeel	: Begane grond, gevels		
schaal:	1/50 1/100		
status:	voorlopig		
projectnummer	23-027		

WONEN AAN DE
NASSAUSTRAAT
RIJSSSEN